



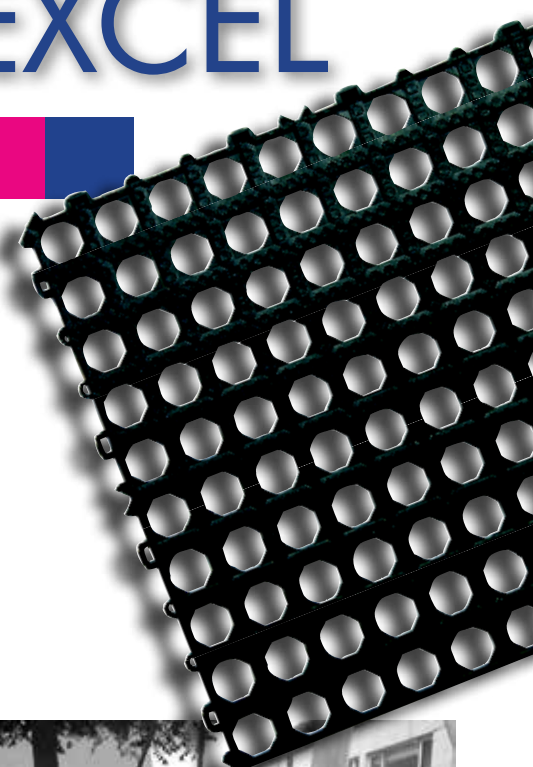
# PLAYMATTATM

# EXCEL

## SELF-INSTALL SCUFF PADS - EXCEL

The Play Matta™ Excel Scuff Pad System provides a low cost and low maintenance solution for high use playground areas. Excel tiles are supplied in singles and/or quads (4 tiles joined together) along with glue. Just clip together to required size. The system can be easily self-installed and will only require an occasional 'shake out' to ensure the tiles remain above the existing woodchip.

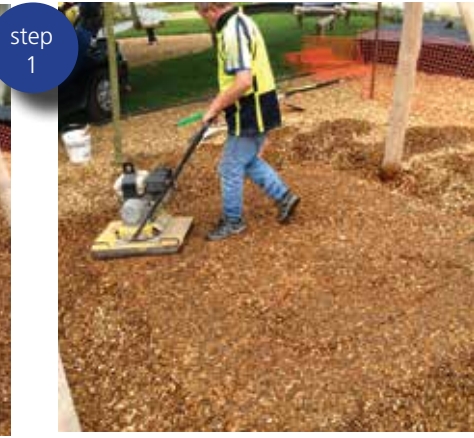
- Easily self-installed
- Minimises maintenance – only requires an occasional 'shake out'
- Simple releveling process without removing the tiles
- Protects and optimises scuff zones by retaining the existing woodchip base
- Playability ensured – no more water pooling or scuffed out zones
- Critical fall height will be retained when installed over certified woodchip
- 6-year warranty on product





# INSTALLATION STEPS

- step one: Woodchip is raked and shaped
- step two: Topside of woodchip is compacted and levelled ensuring adequate depth for tile pinning
- step three: Play Matta™ Excel tiles are rolled out over the compacted woodchip and securely pinned with Play Matta fixing pins
- step four: Woodchips are filled in and levelled allowing for a flush transition
- step five: Enjoy your durable and high performing scuff zones.



## PLAY MATTA™ EXCEL SCUFF PADS:

- Provide wheelchair accessibility to play equipment
- Protect existing woodchip scuff zones
- Reduce maintenance
- Help retain fall height compliance
- Protect users in areas where it's needed most



## RECYCLING TECHNOLOGY

Play Matta™ is the result of our commitment to providing environmentally sound products for today's play spaces. We understand the importance of long-term resource sustainability and are determined to promote and expand our significant recycling effort. Play Matta™ Excel carries the Environmental Choice New Zealand ecolabel. Play Matta™ mats are manufactured in New Zealand using 100% recycled feedstock.



Cert™  
Recycled Rubber Products: EC-19-09  
Recycled Plastic Products: EC-06-01